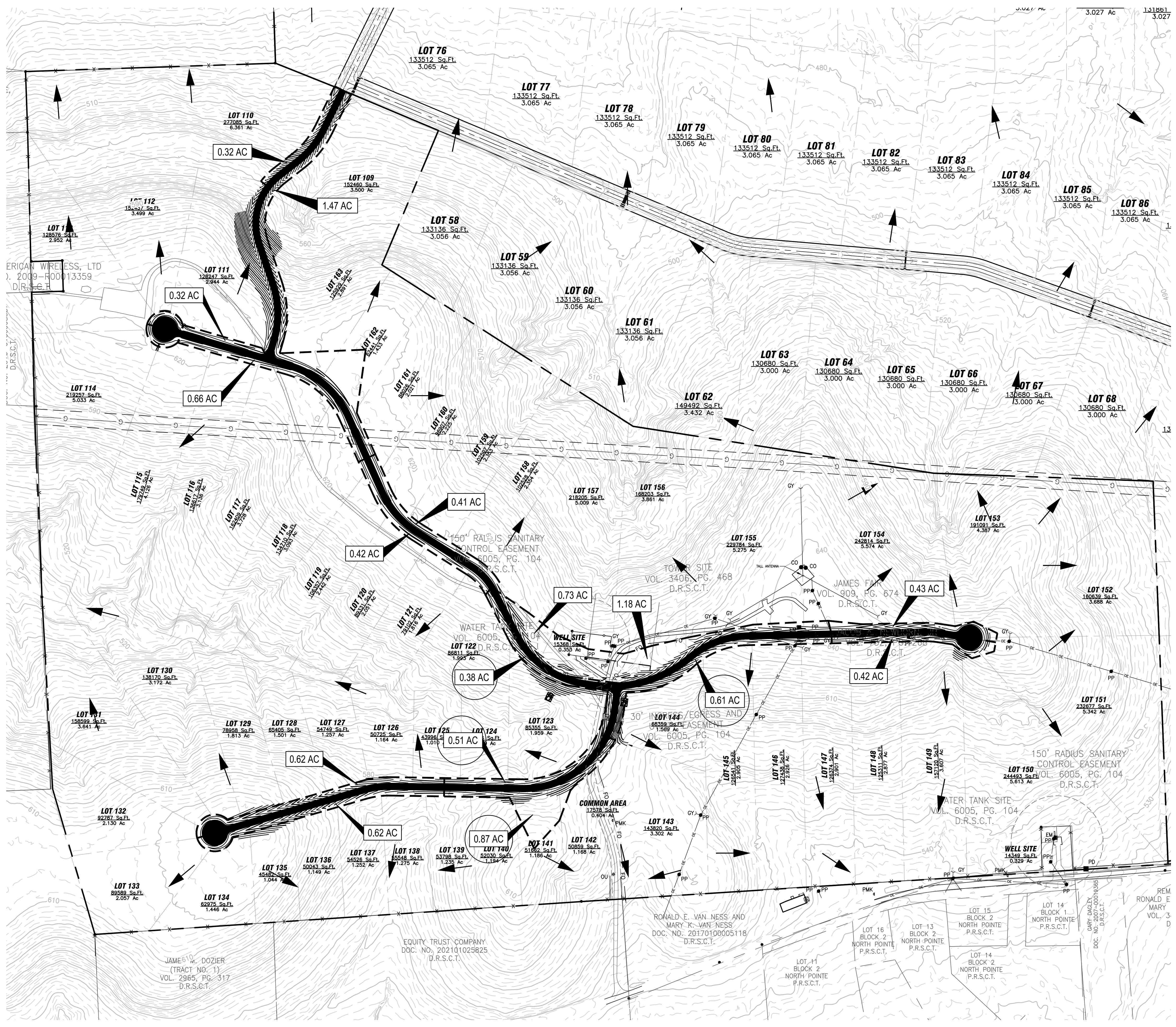


3/04/2024 9:13AM E:\2022\200\000\2022.125\000\01 Design & Drafting\02 Civil\01 C3D\Phase 2\125\000\01 DriveWay Culverts.dwg DRIVEWAY CULVERTS



GRAPHIC SCALE: 1" = 150' Feet

LEGEND

- EXISTING MAJOR CONTOUR ——— 530 ———
- EXISTING MINOR CONTOUR ——— 532 ———
- PROPOSED MAJOR CONTOUR ——— 530 ———
- PROPOSED MINOR CONTOUR ——— 532 ———
- DRAINAGE DIVIDE - - - - -
- AREA (ACRES) X.XX AC
- FLOW ARROW →

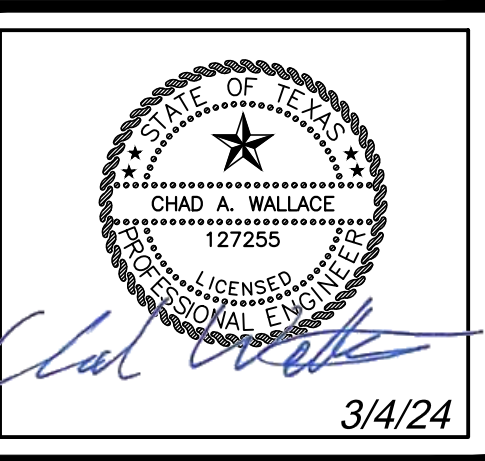
PROPOSED DRIVEWAY CULVERTS	
CULVERT MATERIAL	CMP
MANNING'S N	0.024
ENTRANCE TYPE	MITERED
LOTS	CULVERT SIZE
109-163	15"

MAXIMUM DRIVEWAY CULVERT DRAINAGE AREAS				
Culvert	Capacity	Runoff	10-Yr	Max. Contributing
D, in	Q, cfs	C	I, in/hr	Area A, ac
15	3.9	0.35	6.50	1.72
18	6.1	0.35	6.50	2.68
24	12.5	0.35	6.50	5.50
30	21.9	0.35	6.50	9.63

B=B
BAIRD, HAMPTON & BROWN
 engineering and surveying
 6300 Riegels Place, Suite 700 Fort Worth, TX 76116
 mail@bhinc.com • 817.338.1277 • bhinc.com
 TBPELS Firm #44, #10011900, #10011902, #10194146

STAR MOUNTAIN RANCH
PHASE 2
 SMITH COUNTY, TEXAS

DRIVEWAY CULVERTS			
NO.	DESCRIPTION	DATE	DATE
1	REVISION - ROAD AND WATER RE-ALIGNMENT	2/7/2024	
2	REVISION - ROAD AND WATER RE-ALIGNMENT	3/4/2024	



PROJECT NUMBER:	2022.125.000
DATE:	3/4/2024
DRAWN BY:	CEK
DESIGN BY:	CEK
CHECKED BY:	CW
SHEET	
C3.5	